



## Your contact details:

Title:

Name:

Company:

Customer no.

Street:

ZIP/postal code, city:

Country:

E-mail:

Phone:

## Ordering spare parts

The spare parts for Type 3251 are listed on the next pages. This document can also be used for ordering:

1. Fill in your contact data and information on the product.
2. Enter the quantity of spare parts needed.
3. Click [Send form] button to attach the PDF form to an e-mail.
4. Attach additional information (e.g. invoice, photos) to the e-mail, if necessary.
5. Send e-mail to spareparts-de@samsongroup.com.

Either

Configuration ID (Var-ID):

or

SAMSON order no.:

Position in order:

or specifications on the nameplate

(description of the currently valid nameplate ► EB 8051)

Type designation:	<input type="text" value="3251"/>
Material:	<input type="text"/>
Valve size:	<input type="text"/>
Pressure rating:	<input type="text"/>
Flow coefficient:	<input type="text"/>
Characteristic:	<input type="text"/>
Seat-plug seal:	<input type="text"/>
Seat code:	<input type="text"/>
Pressure balancing:	<input type="text"/>
Flow divider/AC trim:	<input type="text"/>
Version	<input type="text"/> Standard bonnet <input type="text"/> With insulating section <input type="text"/> With bellows seal
Application	<input type="text"/> NACE <input type="text"/> Oxygen <input type="text"/> Industrial gases <input type="text"/> Chlorine

Send form

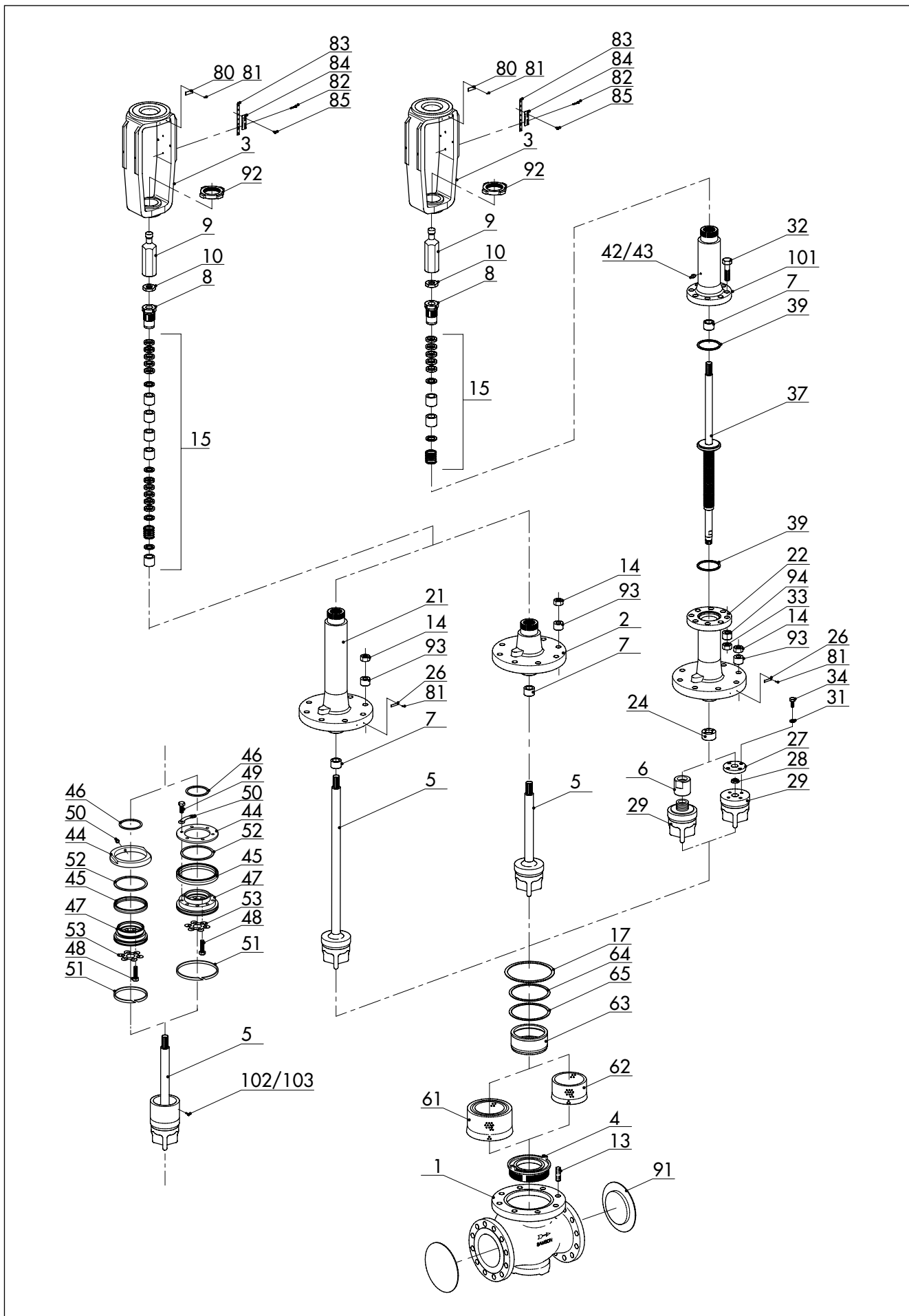
Print form

Clear form

Edition November 2022

Spare Parts List

EL 8051 EN



Spare part no.		Qty.	Filled in by SAMSON: item number
1	Body		
2	Flange		
3	Yoke		
4	<b>Seat</b>		
5	<b>Plug (with plug stem)</b>		
6	Bellows nut		
7	Guide bushing		
8	<b>Threaded bushing (packing nut)</b>		
9	Stem connector nut		
10	Lock nut		
13	Stud bolt		
14	Body nut		
15	<b>Packing</b>		
17	<b>Body gasket</b>		
21	Insulating section		
22	Bellows seal		
24	Guide bushing		
26	Label (bellows seal or insulating section)		
27	Flange		
28	Clamping ring		
29	<b>Plug for version with bellows seal</b>		
30	<b>Retaining washers</b>		
31	Washer		
32	Screw		
33	Nut		
34	Screw		
37	<b>Plug stem with metal bellows</b>		
39	<b>Gasket</b>		
42	Screw plug		
43	Seal		
44	Ring/ring nut <sup>1)</sup>		
45	<b>Packing ring<sup>1)</sup></b>		
46	<b>Gasket<sup>1)</sup></b>		
47	Support <sup>1)</sup>		

Spare part no.		Qty.	Filled in by SAMSON: item number
48	Hex screw <sup>1)</sup>		
49	Hex screw <sup>1)</sup>		
50	Lock <sup>1)</sup>		
51	Guide <sup>1)</sup> (several guides only for version with graphite seal)		
52	Ring <sup>1)</sup> (only for version with graphite seal)		
53	Snap ring <sup>1)</sup>		
61	<b>Flow divider ST 2<sup>2)</sup></b>		
62	<b>Flow divider ST 1 or ST 3<sup>2)</sup></b>		
63	Ring <sup>2)</sup>		
64	<b>Gasket<sup>2)</sup></b>		
65	<b>Gasket<sup>2)</sup></b>		
80	Nameplate		
81	Grooved pin		
82	Screw		
83	Hanger		
84	Travel indicator scale		
85	Screw		
91	Protective caps		
92	Castellated nut		
93	Expansion sleeve		
94	Expansion sleeve <sup>3)</sup>		
101	Bellows bonnet		
102	Snap ring <sup>1)</sup> (only for version with bellows seal)		
103	Screw <sup>1)</sup>		

<sup>1)</sup> Version with balanced valve plug

<sup>2)</sup> Version with flow divider

<sup>3)</sup> For DN 15 to 150 only

Specifications subject to change without notice

---